

# H343FD 2-Ply Deluxe Cooling Fabric Face Mask

JOB NO.

QUANTITY:

PRINT METHOD:

PRODUCT COLOUR:

PRINT COLOUR:

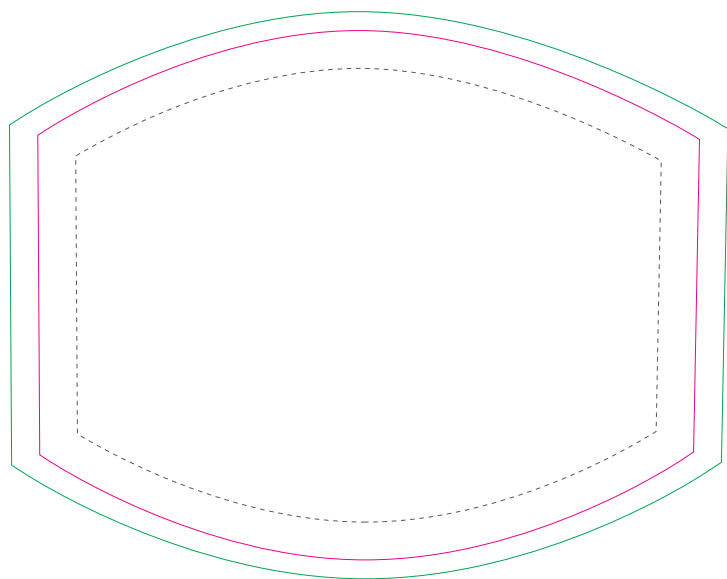
ADDITIONAL INFORMATION: **Small details or text, including ®©™, may fill in and not be legible**

## ARTWORK 50%

Sublimation Print: 190mm w x 150 mm h (including bleed)

Safe Zone area: 154.858 mm w x 120mm h

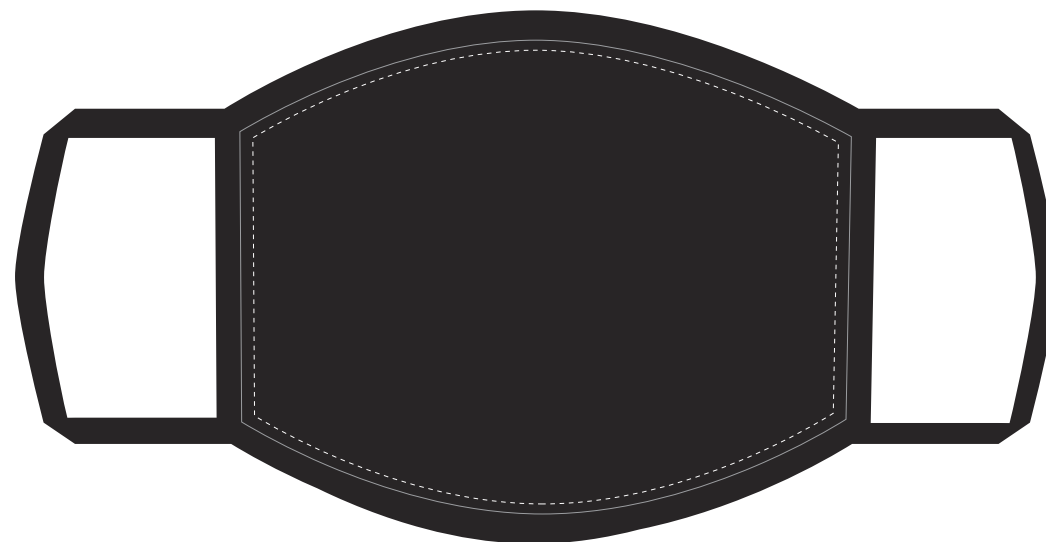
Product Size: 175mm w x 140mm h, 155 gsm



Actual Print Size:

**Notes:** Dotted line (safe zone area - keep important elements within this area)  
Pink line (trim line)  
Green line (bleeding line)

## LAYOUT 50% **NEW**



**NOTE: 2 ART PROOFS** supplied FREE. Further art approvals will incur a **\$20** fee per proof

**ART PROOF**

**1 Free**

**2 Free**

**3 \$20**

Note: Line drawings are for print positional guide only. Drawings are approx. 100% size unless specified and may not be an exact representation of the detail of the product. Please familiarise yourself with the product prior to approving.